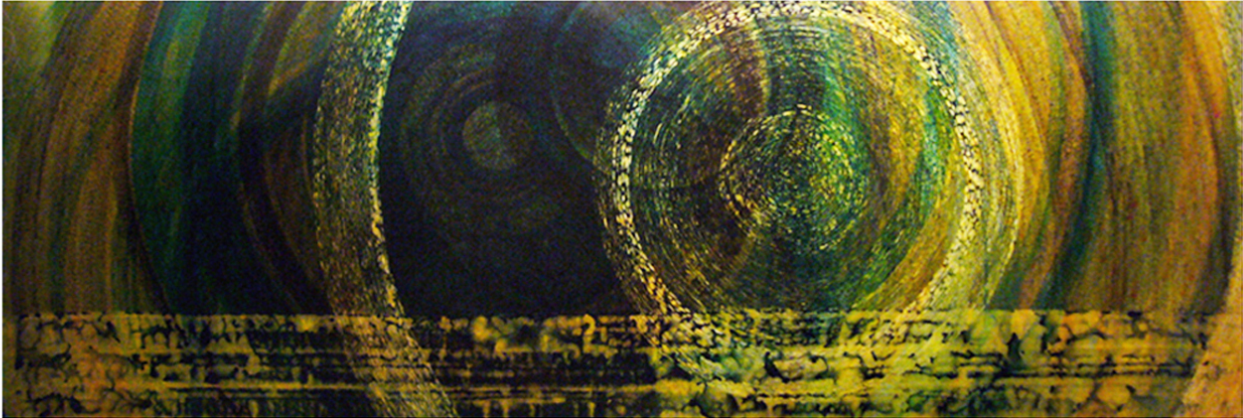


Knight, Christopher. "Traces of nature on a grand scale." *Los Angeles Times*, 16 May 2008, sec. E, p.21.



### Traces of nature on a grand scale

Five large and seven smaller new ink paintings on synthetic white vellum by **Sandeep Mukherjee** are abstractions that create mysterious associations with nature. A long sheet covered with small dabs of golden brown or scarab green dots in layered circles is like a scroll painting of rain causing ripples on a pond, sunspots on overexposed film or a close-in view of the ancient rings of a felled tree. Looked at closely with light glancing off the surface at an angle, the translucent inky dots recall snail tracks.

Mukherjee often works large -- the biggest paintings here are 14 feet wide -- so the paintings need room to breathe. The [show](#) is in two venues: the rather cramped Sister Gallery and, two blocks north, an expansive new space called Cottage Home.

At each, Mukherjee shows one work that is distinctive from the rest. Dark feathered marks, dense at the periphery of the sheet and a loose tangle toward the center, create the sensation of looking up into the sky from a place within the Earth. Unlike Miró, whose insect-view of the universe conjured a delirious Surrealist fantasy, Mukherjee is content to leave you in the aesthetic underbrush. It's a surprisingly marvelous place to be.

*Sister Gallery, 437 Gin Ling Way, and Cottage Home, 410 Cottage Home Road, Chinatown, (213) 628-7000, through June 21. Closed Sundays and Mondays. [www.sisterla.com](http://www.sisterla.com).*